



Model Number:  
KTS06-TB  
KTS06-TC  
KTS06-TO

<http://www.luxierusa.com/>

# Installation Guide

Kitchen Series

Single Handle Pull-down Kitchen faucet



Tools you will need:



Adjustable Wrench



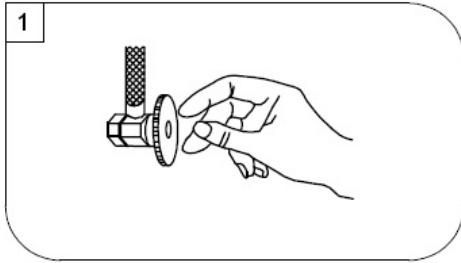
Phillips Screwdriver

## SAFETY TIPS:

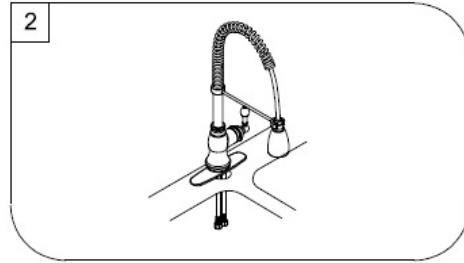
- If you use soldering for the installation of the faucet, the seats, cartridges and washers will have to be removed before using flame. Otherwise, warranty will be void on those parts.

# luxier

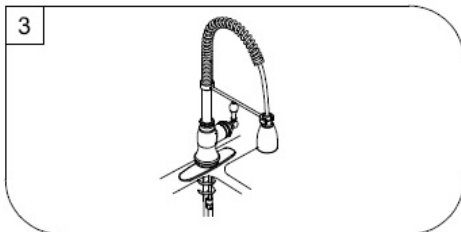
Model Number:  
KTS06-TB  
KTS06-TC  
KTS06-TO



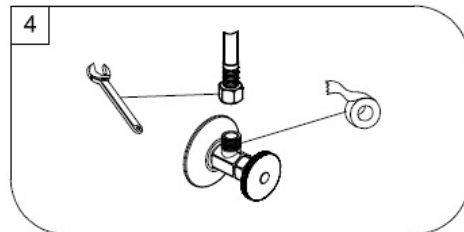
1 Shut off water supplies. Remove old faucet. Clean sink surface in preparation for new faucet.



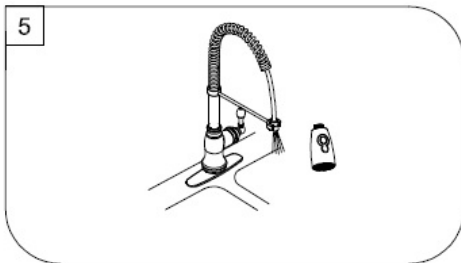
2 Screw the mounting stud into the body. Place Escutcheon on bottom of new faucet (Optional). Position Faucet through mounting hole.



3 Secure the faucet to sink by installing rubber washer, steel washer and nut onto the mounting stud. Tighten with wrench.

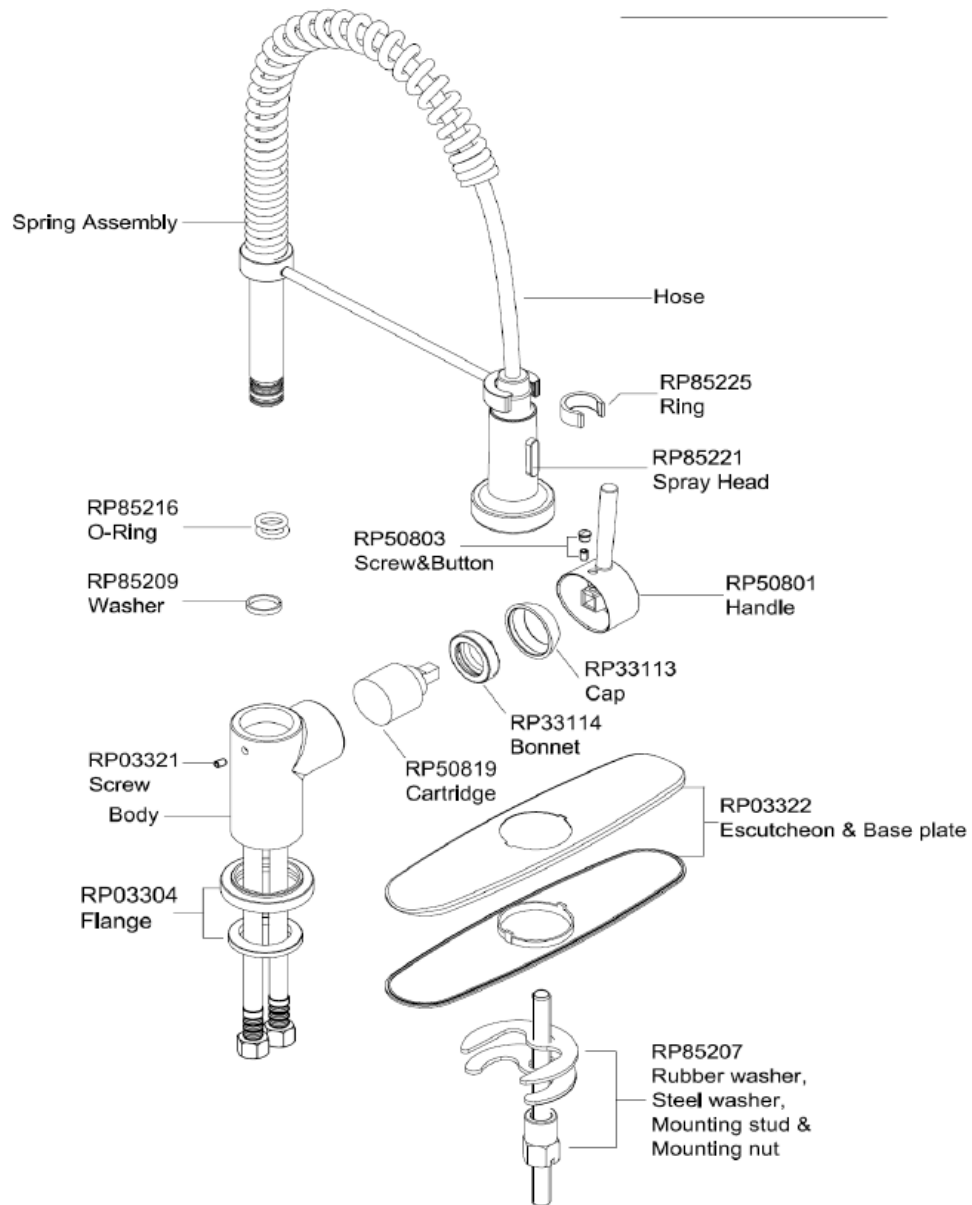


4 Apply pipe tape onto threads of water supplies. Use wrench when tightening the hose connection, do not overtighten.



5 Important: After installation is completed. Remove Spray head and turn faucet handle all the way on. Turn on hot and cold water supplies and flush water lines for one minute. Check all connections for leaks. Re-tighten if necessary, but do not overtighten. Reinstall Spray head. Your new faucet is now ready to use.

## Replacement parts





Model Number:  
KTS06-TB  
KTS06-TC  
KTS06-TO

### Trouble-Shooting

If you've followed the instructions carefully and your faucet still does not work properly, take these corrective steps.

<u>Problem</u>	<u>Cause</u>	<u>Action</u>
-Leaks underneath handle  -Aerator leaks or has an inconsistent water flow pattern	-Retainer nut has come loose. O-ring is dirty or damaged  -Aerator is dirty or mis-fitted.	Tighten the retainer nut, clean or replace O-ring  -Unscrew aerator remove any debris, check seating of rubber seal then re-assemble aerator

### Limited Lifetime Warranty

Luxier USA warrants to the original purchaser that its products will be free from defects in workmanship and materials. This warranty does not cover any other labor or service charges associated with the removal, repair, or reinstallation of Luxier products. This express warranty does not apply to products that have been damaged as a result of misuse, abuse, negligence, accident, faulty installation or maintenance practices and/or used in any manner contrary to those recommended by the manufacturer.